

SITE PLAN

RODENT CONTROL PLAN

BAIT POINT	LOCATION	FORMULATION / GRAMS USED										
1												
2												
3												
4												
5												
6												
7												
8												
9												
10												
11 EXAMPLE	Egg Picking Zoo	Dieneicum grain 0.005 300g	AT 200g	3 Rats Disposed	AT 200g	5 Rats Disposed	PT 150g	3 Rats Disposed	PT 50g	1 Rat Disposed	NT None	None
KEY:	NT = No Take PT = Part Take L = Lost	AT = All Taken DNT = Disturbed Non Target										

IMPORTANT: Keep a separate 'Rodent Monitoring Log' before and after treatments. Detail actions required.

Date Treatment Finished

Date Bait Removed

Signed

SITE / FARM PLAN - BAIT POINT LOCATIONS - PROOFING & HYGIENE ISSUES

Draw diagram of site / farm and indicate each bait point. Note signs of activity including proofing / hygiene issues.

Site / Farm Name:

Date of Plan:

Approved Operators Name:

Rodenticide  
USER  
GUIDE

Lodi's  
Gems  
...to die for!





RUBY  
Bait

JADE  
Bait

SAPPHIRE  
Bait



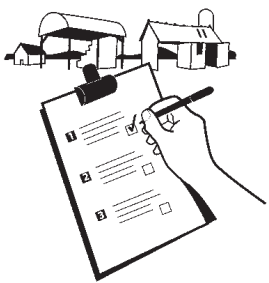
LodiUK

Leading through innovation

RODENTICIDE USER GUIDE

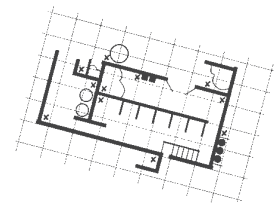


LODI UK supporting Campaign for Responsible Rodenticide Use



Always have a planned approach

- Before treatment begins, a thorough survey of the infested site is an essential key to success when using any rodenticide.
- Environmental changes which could be made to reduce the attractiveness of the site to rodents should be noted for implementing after the treatment. Usually this will involve rodent proofing and removing rubbish and weeds that provide harbourages and cover. However, the site should not be cleared before treatment since this will disturb the rodent population and make bait acceptance more difficult to achieve.
- Obvious food, such as spilled grain, should be removed as far as possible and any food sources covered.
- Rodenticide baits should only be used for as long as is necessary to achieve satisfactory control.
- In most cases, any anticoagulant bait should have achieved control within 35 days. Should activity continue beyond this time, the likely cause should be determined and documented. If bait continues to be consumed without effect, a more potent anticoagulant should be considered. If bait take is poor, relative to the apparent size of the infestation, consideration should be given to re-siting the bait points and possibly changing to another bait base, as well as making other environment changes.



Always record quantity of bait used and where it's placed

- A simple site plan or location list identifying areas of particular concern pertinent to the site should be drawn up and retained.
- A record of all bait points and the amount of bait laid should be maintained during the treatment. Activity should be noted at each bait point, including any missing or disturbed baits, as the treatment progresses.
- By carefully recording the sites of all bait points responsible users of rodenticides are able to return to these sites at the end of the treatment and remove uneaten bait so that it does not become available to wildlife.



Always use enough baiting points

- Users should follow the label instructions regarding the size and frequency of bait points and the advice given regarding the frequency and number of visits to the site.
- By using enough bait points the rodent control treatment will be conducted most efficiently and in the shortest possible time. This will restrict the duration of exposure of non-target animals to a minimum.



Always collect and dispose of rodent bodies

- The bodies of dead rodents may carry residues of rodenticides and, if eaten by predators or scavengers, may be a source of wildlife exposure to rodenticides.
- It is essential to carry out regular searches for rodent bodies, both during and after the treatment period. Bodies may be found for several days after rats have eaten the bait and rats may die up to 100 metres or more away from the baited site.
- Any rodent bodies should be removed from the site and disposed of safely using the methods recommended on the label.



Never leave bait exposed to non-target animals and birds

- Care should be taken to ensure that bait is sufficiently protected to avoid accidentally poisoning other mammals and birds. Natural materials should be used where possible.
- Bait stations should be appropriate to the prevailing circumstances. They should provide access to the bait by rodents, while reducing the risks of non-target access and interference by unauthorised persons. They should protect the bait from contamination by dust or rain. Their design, construction and placement should be such that interference is minimised.



Never fail to inspect bait regularly

- Where the risk assessment or treatment records show that multiple visits are required, then those should be made as frequently as is considered necessary. Daily inspection may be required in some circumstances.
- At each visit, baits should be replenished according to the product label and a thorough search made to ensure that bodies and any spilled bait are removed and disposed of safely. Records of such visits should be maintained.



Never leave bait down at the end of the treatment

- Bait left out at the end of a treatment is a potential source of contamination of wildlife.
- On completion of the treatment, records should be updated to signify that the infestation is controlled and that, as far as reasonably practical, all steps have been taken to ensure that the site is now free of rodenticide bait.

Product Description & Advice	IMPORTANT: Always read & follow the label before using rodenticides			Product Code	Flavouring / Attractant	Type of Bait	LD50 - Lethal Dose of bait for	LD50 - Lethal Dose of bait for	Permanent Baiting	Indoors Outdoors Around Buildings	Open Area baiting	Burrow Baiting	Waste Dumps	Sewer Baiting	Pulsed Baiting
RUBY	Active Ingredient - DIFENACOUm 0.005%						200g Rat - Days to kill after LD50	20g Mouse - Days to kill after LD50	Follow CRRU Guidelines	Rats and Mice	Rats	Rats	Rats	Rats	Rats
Ruby 3kg Loose Grain - Use in tamper proof bait station where possible				R8415	Aniseed	Multi-Feed Bait	7-10g - 5-7 days	0.32g - 1-3 days	YES	YES	YES	YES	YES	NO	NO
Ruby 5kg Loose Grain - Use in tamper proof bait station where possible				R8999	Aniseed	Multi-Feed Bait	7-10g - 5-7 days	0.32g - 1-3 days	YES	YES	YES	YES	YES	NO	NO
Ruby 10kg Loose Grain - Use in tamper proof bait station where possible				R8414	Aniseed	Multi-Feed Bait	7-10g - 5-7 days	0.32g - 1-3 days	YES	YES	YES	YES	YES	NO	NO
Ruby 20kg (2x10kg) Loose Grain - Use in tamper proof bait station where possible				R8404BOX	Aniseed	Multi-Feed Bait	7-10g - 5-7 days	0.32g - 1-3 days	YES	YES	YES	YES	YES	NO	NO
Ruby 5kg Sachets - Do not open sachets as keeps bait fresh. Rodents will gnaw packaging				R8990	Aniseed	Multi-Feed Bait	7-10g - 5-7 days	0.32g - 1-3 days	YES	YES	YES	YES	YES	NO	NO
Ruby 10kg Sachets - Do not open sachets as keeps bait fresh. Rodents will gnaw packaging				R8425	Aniseed	Multi-Feed Bait	7-10g - 5-7 days	0.32g - 1-3 days	YES	YES	YES	YES	YES	NO	NO
Ruby 3kg Paste Sachet - Secure on bait station rods or nail on to pieces of wood & place inside station				RDP-3	Peanut Oils	Multi-Feed Bait	7-10g - 5-7 days	0.32g - 1-3 days	YES	YES	YES	YES	YES	NO	NO
Ruby 5kg Paste Sachets - Secure on bait station rods or nail on to pieces of wood & place inside station				RDP-5	Peanut Oils	Multi-Feed Bait	7-10g - 5-7 days	0.32g - 1-3 days	YES	YES	YES	YES	YES	NO	NO
Ruby 3kg Blocks - Secure on bait station rods or nail on to pieces of wood & place inside station				RN3241	Plain Extruded	Multi-Feed Bait	7-10g - 5-7 days	0.32g - 1-3 days	YES	YES	YES	YES	YES	YES	NO
Ruby 5kg Blocks - Secure on bait station rods or nail on to pieces of wood & place inside station				RN3242	Plain Extruded	Multi-Feed Bait	7-10g - 5-7 days	0.32g - 1-3 days	YES	YES	YES	YES	YES	YES	NO
Ruby 10kg Blocks - Secure on bait station rods or nail on to pieces of wood & place inside station				RN3243	Plain Extruded	Multi-Feed Bait	7-10g - 5-7 days	0.32g - 1-3 days	YES	YES	YES	YES	YES	YES	NO
Ruby 20kg Cut Wheat - Ideal for large mouse infestations				R8499	Aniseed	Multi-Feed Bait	7-10g - 5-7 days	0.32g - 1-3 days	YES	YES	YES	YES	YES	NO	NO
JADE	Active Ingredient - BROMADIOLONE 0.005%														
Jade 3kg Loose Grain - Use in tamper proof bait station where possible				RF8439	Plain	Multi-Feed Bait	5g - 4-6 days	0.7g - 2-4 days	YES	YES	YES	YES	YES	NO	NO
Jade 5kg Loose Grain - Use in tamper proof bait station where possible				RF8440	Plain	Multi-Feed Bait	5g - 4-6 days	0.7g - 2-4 days	YES	YES	YES	YES	YES	NO	NO
Jade 10kg Loose Grain - Use in tamper proof bait station where possible				RF8441	Plain	Multi-Feed Bait	5g - 4-6 days	0.7g - 2-4 days	YES	YES	YES	YES	YES	NO	NO
Jade 20kg (2x10kg) Loose Grain - Use in tamper proof bait station where possible				RF8434BOX	Plain	Multi-Feed Bait	5g - 4-6 days	0.7g - 2-4 days	YES	YES	YES	YES	YES	NO	NO
Jade 5kg Grain Sachets - Do not open sachets as keeps bait fresh. Rodents will gnaw packaging				RF8445	Plain	Multi-Feed Bait	5g - 4-6 days	0.7g - 2-4 days	YES	YES	YES	YES	YES	NO	NO
Jade 10kg Grain Sachets - Do not open sachets as keeps bait fresh. Rodents will gnaw packaging				RF8450	Plain	Multi-Feed Bait	5g - 4-6 days	0.7g - 2-4 days	YES	YES	YES	YES	YES	NO	NO
Jade 3kg Blocks - Secure on bait station rods or nail on to pieces of wood & place inside station				R8464	Plain Extruded	Multi-Feed Bait	5g - 4-6 days	0.7g - 2-4 days	YES	YES	YES	YES	YES	YES	NO
Jade 5kg Blocks - Secure on bait station rods or nail on to pieces of wood & place inside station				RF8447	Plain Extruded	Multi-Feed Bait	5g - 4-6 days	0.7g - 2-4 days	YES	YES	YES	YES	YES	YES	NO
Jade 10kg Blocks - Secure on bait station rods or nail on to pieces of wood & place inside station				RF8448	Plain Extruded	Multi-Feed Bait	5g - 4-6 days	0.7g - 2-4 days	YES	YES	YES	YES	YES	YES	NO
Jade Cluster Bar 5kg - Pierce on to bait station rods to secure in place. Ideal for rats and mice after high fat content bait				R8453	Fats & Multi Grain	Multi-Feed Bait	5g - 4-6 days	0.7g - 2-4 days	NO	YES	NO	NO	NO	NO	NO
SAPPHIRE - UK's Fastest Rat and Mouse Killer	Active Ingredient - BRODIFACOUm														
Sapphire Paste 3kg 0.004% - Secure on bait station rods or nail on to pieces of wood & place inside station				RFP - 3	Peanut Oils	Single Feed Bait	2-3g - 2-3 days	0.2g 1-2 days	NO	YES	NO	YES	NO	NO	YES
Sapphire Paste 3kg 0.004% - Secure on bait station rods or nail on to pieces of wood & place inside station				SB3KG	Peanut Oils	Single Feed Bait	2-3g - 2-3 days	0.2g 1-2 days	NO	YES	NO	YES	NO	NO	YES
Sapphire Paste 5kg 0.004% - Secure on bait station rods or nail on to pieces of wood & place inside station				RFP - 5	Peanut Oils	Single Feed Bait	2-3g - 2-3 days	0.2g 1-2 days	NO	YES	NO	YES	NO	NO	YES
Sapphire Paste Tubes 280g - Sold in 12's only 0.004% - Ideal in arable grain environment as an alternative food source or hard to reach areas				R8645	Peanut Oils	Single Feed Bait	2-3g - 2-3 days	0.2g 1-2 days	NO	YES	NO	YES	NO	NO	YES
Sapphire 3kg Mixed Grain Bait 0.005% - Whole and cut wheat mix. Ideal for both Rats & Mice. Use in tamper proof bait station where possible				R8454	Apple	Single Feed Bait	2-3g - 2-3 days	0.2g 1-2 days	NO	YES	NO	YES	NO	NO	YES
Sapphire 5kg Mixed Grain Bait 0.005% - Whole and cut wheat mix. Ideal for both Rats & Mice. Use in tamper proof bait station where possible				R8456	Apple	Single Feed Bait	2-3g - 2-3 days	0.2g 1-2 days	NO	YES	NO	YES	NO	NO	YES
Sapphire 10kg Mixed Grain Bait 0.005% - Whole and cut wheat mix. Ideal for both Rats & Mice. Use in tamper proof bait station where possible				R8465	Apple	Single Feed Bait	2-3g - 2-3 days	0.2g 1-2 days	NO	YES	NO	YES	NO	NO	YES
Sapphire 20kg (2x10kg) Mixed Grain Bait 20kg 0.005% - Whole and cut wheat mix. Ideal for both Rats & Mice. Use in tamper proof bait station where possible				R8455BOX	Apple	Single Feed Bait	2-3g - 2-3 days	0.2g 1-2 days	NO	YES	NO	YES	NO	NO	YES
Sapphire 5kg Mixed Grain Bait sachets (100x50g sachets) 0.005% - Do not open sachets as keeps bait fresh. Rodents will gnaw packaging				R8460	Apple	Single Feed Bait	2-3g - 2-3 days	0.2g 1-2 days	NO	YES	NO	YES	NO	NO	YES
BLACK PEARL - UK's Fastest Killing Mouse Poison. Kills Mice whilst they sleep	Active Ingredient - ALPHACHLORALOSE 4.0%									INDOORS MICE ONLY					
Black Pearl Grain 1kg - Do not open sachets as keeps fresh. Mice will gnaw packaging. No secondary poisoning risk to non target				RF8461	Plain Pin head oat	Single Feed Bait	N/A	0.1g-0.2g - 1 day	NO	YES	NO	NO	NO	NO	NO
Black Pearl Paste 1kg - Secure on bait station pins located in Lodi mouse stations. No secondary poisoning risk to non target				RF8462	Hazel Nut Oils	Single Feed Bait	N/A	0.1g-0.2g - 1 day	NO	YES	NO	NO	NO	NO	NO
Black Pearl Paste Tubes 270g - Sticky formulated bait. Use sporadically to keep mice interested. No secondary poisoning risk to non target				R8644	Hazel Nut Oils	Single Feed Bait	N/A	0.1g-0.2g - 1 day	NO	YES	NO	NO	NO	NO	NO
UV Monitoring Baits - Control should be achieved in most instances with Anticoagulant Baits in 35 days. Use UV baits to monitor for further activity. Part of CRRU Best Practice 35 Day Baiting Rule															
UV Blocks - Can track droppings and urine with UV torch to show rodent runs				LB4	Plain Extruded - UV Tracker	Non Toxic	N/A	N/A	YES	YES	YES	YES	YES	YES	NO
UV Paste - Can track droppings and urine with UV torch to show rodent runs				LP4	Peanut Oils - UV Tracker	Non Toxic	N/A	N/A	YES	YES	YES	YES	YES	NO	NO
HARMONIX RODENT PASTE															
Harmonix Rodent Paste 5 Kg - Min Order 2 Per outer				HARMXPSKG	Peanut oils	Paste Sachet	14g - 2-5 days	1.5-25g - 2-5 days	YES	YES	YES	YES	YES	NO	NO

Product Description & Advice	Product Code	Flavouring/ Attractant	Indoors Outdoor Around Buildings	Type of Bait	LD50 - Lethal Dose of bait for	LD50 - Lethal Dose of bait for	Active Ingredient	Proof of Competence Required
RUBY DIFENACOUm RANGE 0.0025%			Rats & Mice		200g Rat - Days to kill after LD50	20g Mouse - Days to kill after LD50		
Ruby Grain 25 - Ruby Grain 10x150g display pack - Do not open sachets as keeps bait fresh. Rodents will gnaw packaging	RGRCPK	Aniseed	YES	Multi-Feed	14-21g - 5-7 days	0.64g - 1-3 days	Difenacoum	NO - Amateur & Professional use
Ruby Blocks 25 - Ruby Block 5x300g display pack - Secure on bait station rods or nail on to pieces of wood & place inside station	RBCPK	Plain Extruded	YES	Multi-Feed	14-21g - 5-7 days	0.64g - 1-3 days	Difenacoum	NO - Amateur & Professional use
JADE BROMADIOLONE RANGE 0.0025%								
Jade Grain 25 - Jade Grain 10x150g display pack - Do not open sachets as keeps bait fresh. Rodents will gnaw packaging	JGRCPK	Plain	YES	Multi-Feed	10g 4-6 days	1.4g 2-4 days	Bromadiolone	NO - Amateur & Professional use
BRODIFACOUm RANGE 0.0025% - UK's Fastest Rat and Mouse Killer for All Users								
Sapphire Paste 25 - Sapphire Paste 10x150g display pack - Secure on bait station rods or nail on to pieces of wood & place inside station	SPCPK	Peanut Oils	YES	Single Feed	3-4g - 2-3 days	0.3g - 1-2 days	Brodifacoum	NO - Amateur & Professional use
Sapphire Grain 25 - Sapphire Grain 10x150g display pack - Oat Bait. Do not open sachets as keeps bait fresh. Rodents will gnaw packaging	SGRCPK	Apple	YES	Single Feed	3-4g - 2-3 days	0.3g - 1-2 days	Brodifacoum	NO - Amateur & Professional use
Sapphire Block 300g tub - Secure on bait station rods or nail on to pieces of wood & place inside station	SB300	Plain Wax Block	YES	Wax Block	2-3g - 2-3 days	0.2g 1-2 days	Brodifacoum	NO - Amateur & Professional use

Useful links

Visit [www.thinkwildlife.org/downloads/](http://www.thinkwildlife.org/downloads/) for information on:

- Permanent Baiting
- Code of Best Practice
- Burrow Baiting
- Rat Control and Game Management
- Environmental Risk Assessment

Visit [www.lodi-uk.com](http://www.lodi-uk.com) for downloads of:

- Rodent Control Plan
- Site / Farm Plan
- Rodent Monitoring Plan
- COSHH Risk Assessment Form
- MSDS Sheets